





SAMUEL & SONS
FALL 2019





*Shown from top to bottom:
Barcelona Tiered Fringe
in Fog, Ombré Fringe in
Garnet, Striped Fringe in
Blush, and Ombré Fringe
in Oyster*

CONTENTS:

Barcelona 5 / Brush Fringe 7 / Semi Custom 11 / St.Moritz 13 / Veranda 17 / Encore 21

Savanna 27 / Amalfi 29 / Milano 31 / Veronique 33 / Technical Specs 35



A RENAISSANCE IN PASSEMENTERIE

Samuel & Sons has redefined classic trim in a contemporary context that has resonated across the globe and sparked a renaissance. The company's fully articulated color palettes and cutting-edge constructions, which combine time-honored handwork techniques with 21st century technological advancements are elegant yet novel.

We are pleased to debut four new collections this season, each varying in aesthetic and construction:

Encore, by Lori Weitzner, brings new vision to pleating and beading, paying homage to Lori's original collections Repertoire and Bijoux while introducing contemporary colorings, advanced techniques and a multifaceted selection of dimensional passementerie. Inspired by floral hues, **Veranda** is a collection of traditional linen passementerie including a delightful beaded fringe, multi-color corded Crete, mélange brush fringe, braided cord, and ombré border. The **Brush Fringe Collection, Second Edition** houses a comprehensive selection of our most distinctive brush fringes from notable collections such as **Aurelia, Paddington, La Terre, Céline, Oberon, Lucente, Inca** and debuts the opulent **Aria Silk Brush. St. Moritz**, influenced by the ambiance of the elegant resorts in Switzerland, is an exquisite collection of sophisticated borders in which pattern is achieved through a combination of felt and velvet appliqués in conjunction with embroidery detailing.

An authority in the world of passementerie, **Samuel & Sons** provides future direction for the industry with each innovative collection, inspiring interior designers to bring their vision to fruition.





Barcelona Ombré Fringe in Oyster

BARCELONA COLLECTION

Barcelona is a luxurious collection of passementerie composed of sleek chainette fringes in a variety of lengths and mélange of hues. The fringes themselves are inspired by those edging the traditional hand-embroidered Mantón de Manila shawls worn by Flamenco dancers. The weight of the shawl fringe influences the ebb and flow of its movement as an integral part of the performance, much in the same way that the Samuel & Sons Barcelona fringes cascade effortlessly down a drape or gracefully around the base of an ottoman.



Shown from left to right: Aria Brush Fringe in Blush, Oro and Emerald



BRUSH FRINGE COLLECTION

SECOND EDITION

This new collection houses a comprehensive selection of our most distinctive brush fringes from notable collections such as Aurelia, Paddington, La Terre, Céline, Oberon, Lucente, Inca and Harbour. Fibers vary from lustrous silk and rayon to dry linen and wool. We are delighted to debut a new pattern in this collection: the opulent 1" **Aria Silk Brush Fringe**, which blooms into 180 degrees.



Inca Brush Fringe in Azul



SEMI CUSTOM PROGRAM

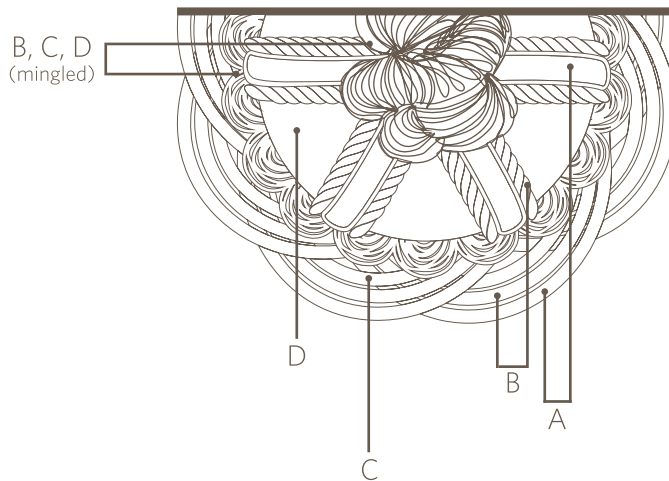
54 Styles | 3 Fibers

Unlimited color combinations

The only online trim designer from the leader in trim.

The Semi Custom program from Samuel & Sons is an innovation that enables designers to create infinite color combinations, in different fibers within a curated collection of patterns.

The Samuel & Sons Semi Custom program allows clients to design and render online, allowing them to see their creations in real-time before ordering.



Fiber Options



Linen (Natural)

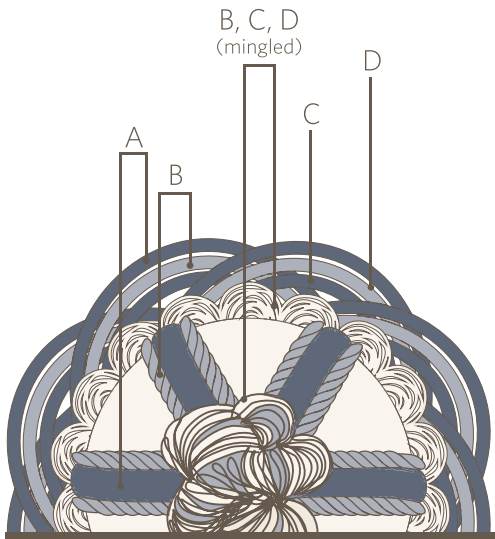


Fibranne (Matte)

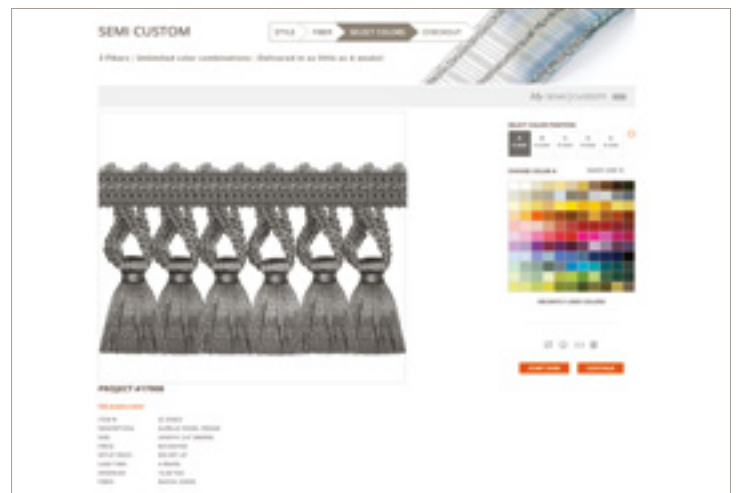
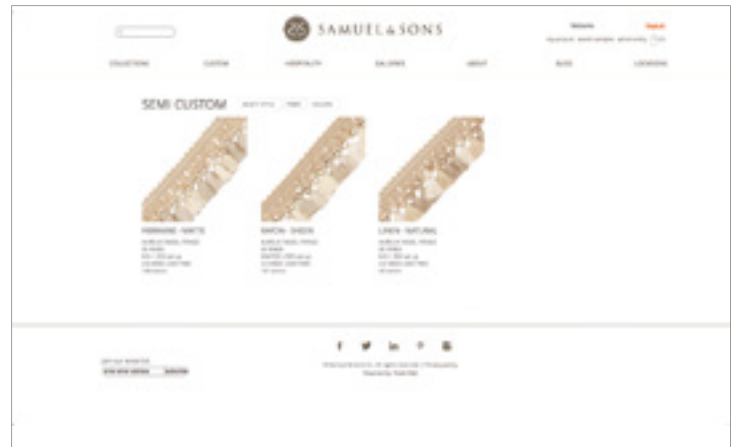


Rayon (Lustrous)

The Process



1. Visit samuelandsons.com/semicustom
2. Select a pattern
3. Select a fiber
4. Select a yarn color per position
5. Receive a Sample Kit with yarn color reelings, neutral memo sample in yarn fiber and full color rendering
6. Pricing and delivery information listed online
7. Approve and order online





*Shown from top to bottom: Moritz Velvet
Border in Garnet, Onyx and Gold*

ST.MORITZ COLLECTION

An exquisite collection of sophisticated borders in which pattern is achieved through a combination of appliqué and embroidery.



Shown from left to right: Botanico Appliqué Border in Cashmere, Carlton Appliqué Border in Oatmeal, Kempinski Appliqué Border in Ecrú, Reine Velvet Border in Ecrú and Botanico Appliqué Border in Ivory



Carlton Appliqué Border in Coral

“The St. Moritz Collection achieves refined dimension in its construction and brings a new level of detail and sophistication to the art of appliqué borders.”

- Marisa Gutmacher, Executive Design Director

Inspired by the ambiance and aesthetic of the elegant resorts in Switzerland’s St. Moritz, this is an exquisite collection of sophisticated borders in which pattern is achieved through a combination of felt and velvet appliqués in conjunction with embroidery detailing. Stylistically, patterns vary in degree of complexity and hue from an intricate felt paisley on linen to an organic maze created with velvet. Appliqué techniques used in the St. Moritz collection incorporate a variety of stitches on fine linen ground cloths with tailored satin stitch edges. Both the felt and velvet used in these appliqué borders are cut with a laser and then individually sewn in succession to create the pattern. This technique produces a dimensional surface effect that enhances characteristics of the pattern either through the cut-out shapes or the line work of the embroidery stitches themselves.



*Shown from top to bottom: Alpina
Velvet Border in Maple, Harbour
Beaded Braid in Flax and Reine
Velvet Border in Maple*



1



2



3

- 1. Veranda Linen Beaded Fringe in Delphinium
- 2. Veranda Linen Appliqué Border in Antique Coral and Robin's Egg
- 3. Veranda Linen Crete in Delphinium

VERANDA COLLECTION

Inspired by garden and floral hues, Veranda is a collection of traditional linen passementerie.

Shown from left to right: Veranda Linen Brush Fringe, Veranda Linen Beaded Fringe, and Veranda Linen Cord with Tape in Delphinium



Veranda is a collection of traditional linen passementerie

including a delightful beaded fringe, multi-color corded crete, mélange brush fringe, braided cord, and ombré border. A series of coordinating felt appliqué embroidered borders completes this ensemble.

Veranda features 12 tonal shades in its repertoire such as Narcissus, Waterlily, Tea Rose and Delphinium, each with a four-color rotation. In some positions, up to eight different color yarns are combined to achieve the tonal balance and nuances in value.





Shown left to right: Veranda Ombré Border in Silver Birch, Veranda Appliqué Border, Linen Brush Fringe and Linen Beaded Fringe in Narcisses, and Appliqué Border in Pebble



ENCORE COLLECTION

BY LORI WEITZNER

Lori Weitzner proudly presents the Encore Collection for Samuel & Sons, a contemporary interpretation of Weitzner's first passementerie collection; composed of exquisitely sophisticated pleated borders.

Shown from left to right: Promenade Pleated Wool Border in Prune and Merengue Pleated Metallic Border in Mulberry

From opposite page, from left to right: Virtuoso Appliqué Border in Iris and Tarantella Pleated Border in Lilac



“Rooted in textiles, I am always searching for and inspired by dimension and texture. The Encore collection celebrates that through pleat, origami, color play, embroidery and beading. The inspiring possibilities trim provides are thrilling and endless.”

– Lori Weitzner



*Show from left to right:
Merengue Pleated Metallic Border in Garden
and Virtuoso Appliqué Border in Cove*

LORI WEITZNER
for SAMUEL & SONS





about
LORI WEITZNER

As principal and creative director of her own New York-based firm, Lori Weitzner has achieved international renown with designs that cross a multitude of disciplines.

In addition to her role as a product designer, Lori is a manufacturer of artful wallcoverings and textiles under her own brand, Weitzner Limited.

She is the recipient of numerous awards including the esteemed Innovation Awards, Best of Neocon and Good Design Awards and Lori's work has recently been added to the permanent collection of Cooper-Hewitt, National Design Museum and has been exhibited at London's Victoria and Albert Museum and Montreal's Musée Decoratifs. She is most recently the author of the book "ODE TO COLOR" which celebrates color and all it's power, moods and associations.

S&S: What is the story behind Encore?

LW: Encore is a very special collection to me because the very first trim collection that I did thirteen years ago, Repertoire, was also all about pleating. I love the technique, but I also love the dimension it gives to what is normally a 2D product. With pleating, it becomes 3D and it becomes alive; as light hits it from different angles in a space it looks really beautiful. What I wanted to do with Encore was push the envelope on what pleating could be.

S&S: What is your favorite style in this collection?

LW: Virtuoso. It is a laser cut pattern that is pleated, digitally printed, and then sewn onto a tape. What I love about it is it's such a unique technique—a very contemporary technique—and yet it has a nod to the old traditional way because of the patterning and the print.

S&S: What colors have you seen trending lately?

LW: We're seeing a lot of nudes, blush tones, and neutrals—but more colorful neutrals—and we're also seeing a lot of greens coming back.



Cabaret Pleated Metallic Gimp in Rosé

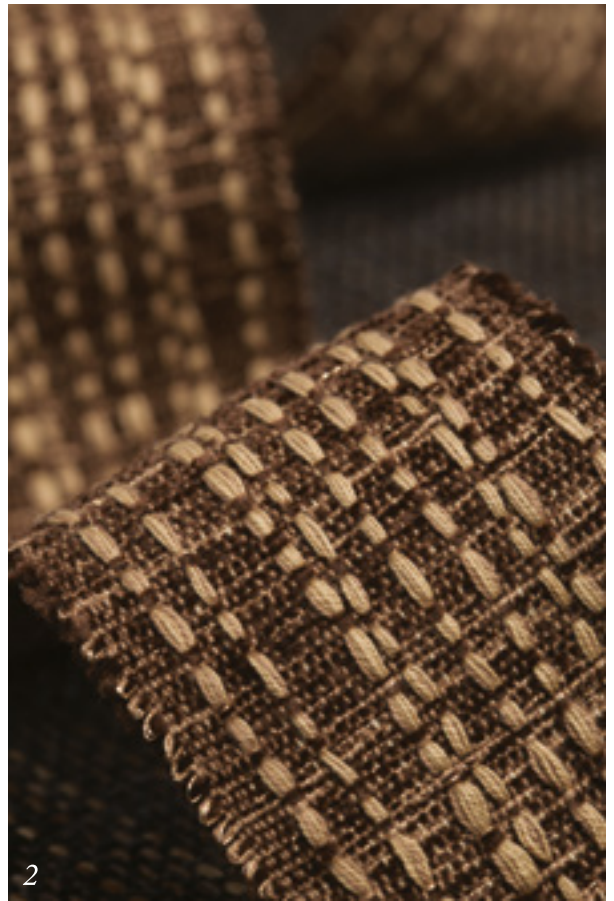
The collection is composed of exquisitely sophisticated pleated borders complemented by the reintroduction of the notable Opaline Cultured Pearl Fringe. Encore brings new vision to pleating and beading, paying homage to Lori's original collection Repertoire and Bijoux while introducing contemporary colorings, advanced techniques and a multifaceted selection of dimensional passementerie.

Fabrics courtesy of Weitzner



*Shown from top to bottom:
Sashay Appliqué Border in
Sail, Alabaster, and Heather*

1. Capella Mohair Border in Ivory
2. Clermont Strié Border in Umber
3. Collingsville Linen Tassel Fringe in Sand,
Isa Embroidered Border in Umber,
Elliot Heathered Border in Sand,
Ashmore Juter Border in Umber,
Winton Cord with Tape in Umber and
Capella Mohair Border in Ivory
4. Ayr Bouclé Border in Shale





SAVANNA COLLECTION

Savanna is inspired by the terrain of the Australian Savanna and is composed of textural passementerie created with mohair, chenille, jute and linen. It focuses on combinations of dimensional fibers with opposite characteristics and their transformation when woven together. Great surface texture is achieved in some of the borders by combining the lush velvet characteristics of chenille with the coarse nature of jute or integrating multiple strands of space-dyed mohair bouclé with viscose.




Shown from left to right: Positano Jumbo Brush Fringe in Slipper, Positano Jumbo Tassel Fringe in Linen and 2" Positano Linen Border in Rosewater layered with Sorrento Stripped Border in Linen



AMALFI COLLECTION

Amalfi is a lifestyle collection of jumbo cotton/linen tassel and brush fringes, borders and cords inspired by coastal living along the Mediterranean with colors influenced by the region's lush vegetation. The Sorrento vignette woven from cotton is composed of a bi-color striped $\frac{1}{4}$ " piping, symmetrical striped border and a twisted cord hanger tassel fringe with a striped header. The Positano vignette woven in a combination of fibers features a plush jumbo brush and tassel fringe complemented by a series of tweed linen borders and braided cords.



“Milano is evocative of the aesthetic we’ve come to be synonymous within respecting the past by incorporating classical design language such as the Greek Key and reinterpreting it by pushing the boundaries of materials and construction while at the same time offering the broadest selection of basics.”

– Marisa Gutmacher, Executive Design Director

Shown from left to right: Nuova Laser Cut Border in Platinum and Venezia Appliqué Border in Marble

Spirito Textured Piping in Waterfall



MILANO COLLECTION

The Milano collection challenges the traditional properties of faux leather in its textural pipings, laser cut and appliqué borders. With this collection, the industry will be introduced to the very first, fully laser cut curvilinear border. Additionally, there is laser cut lace and a series of embroidered appliqués.



1. *Corinne Embroidered Border in Cornsilk and Mireille Embroidered Border in Pearl*
2. *1/8" Veronique Cord with Tape in Cornsilk*
3. *Veronique Tassel Fringe in Cornsilk*



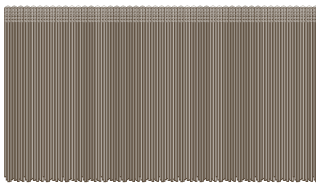
*Shown from left to right:
Corinne Embroidered Border in Limestone
and Mireille Embroidered Border in Antique*

VERONIQUE COLLECTION

Veronique is a classical collection of passementerie composed of a tri-tonal tassel fringe, a 3" fine bullion fringe, two ornate raised embroidered borders and two twisted cords. A unique embroidery technique is employed in the Veronique collection to create the dimensional patterning in its borders. These trimmings are complemented by a double tassel tieback with a bullion skirt, multicolor tassel over-hangers and header molds adorned with crisscross bands and velvet ruche wrapping. A coordinating fine bullion skirt key tassel completes this ensemble.



Barcelona Collection



FR-58822 5" (13cm)

Striped Fringe

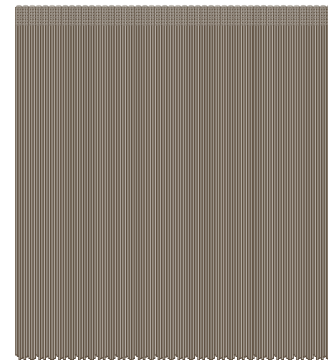
Available in: Vapor, Jewel, Ecrú,
Vermillion, Amazon, Blush, Glacier



FR-58823 8" (20cm)

Tiered Fringe

Available in: Marble, Fog



FR-58821 10" (25cm)

Ombré Fringe

Available in: Silver, Honeycomb,
Oyster, Bronze, Ivory, Gem, Garnet,
Sage, Vert, Porcelain Blue

Brush Fringe Collection

Second Edition



BR-57879 1" (25mm)

Oberon Brush Fringe

Available in: *Platinum, Zinc, Bronze, White Gold, Goldleaf, Antique Gold*



BR-58862 1" (25mm)

Aria Silk Brush Fringe

Available in: *Ecrú, Blush, Oro, Indigo, Wedgewood, Ruby, Vapor, Emerald*



BR-57482 1" (26mm)

La Terre Brush Fringe

Available in: *Snow, Canvas, Dune, Sea Mist, Flax, Pebble*



983-37195 1" (25mm)

Délicat Silk Moss Fringe

Available in: *Sand, Cream, Pewter, Sage, Seafoam, Gold, Crimson, Green, White, French Blue*



BR-57896 1" (25mm)

Inca Brush Fringe

Available in: *Crème, Mesa, Limestone, Agave, Fog, Avocado, Charcoal, Midnight, Azul, Vermillion, Verde, Rainforest*



BR-57084 1.7" (43mm)

Céline Ombré Brush Fringe

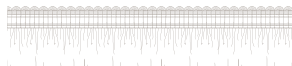
Available in: *Ecrú, Mushroom, Slate, Fig, Geyser, Ink, Poppy, Dahlia*



983-39889 1.75" (45mm)

Paddington Wool Brush Fringe

Available in: *Cashew, Buckskin, Scottish Plaid, Java, Marakesh, Flannel Gray, Angora, King's Court, Tuscan Red, Pecan, Argyle, Lagoon*



BR-58295 1.75" (44mm)

Chevallerie Brush Fringe

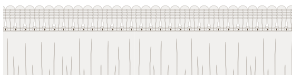
Available colors in all styles: *Pétale, Bordeaux, Macaron, Oro, Jardin, Marzipan, Argent, Crème, Bleu, Amande, Vert*



983-54000 1.75" (45mm)

Lucente Brush Fringe

Available in: *Antique Gold, Platinum, Antique, Copper, Antique Silver*



983-56509 2" (50mm)

Harbour Linen Brush Fringe

Available in: *Sail, Sand Dune, Flax, Sky, Sea Crest, Aqua, Kelp, Lobster, Navy, Cloud, Ebony*



983-56131 2" (50mm)

Aurelia Brush Fringe

Available in: *Chocolate, Tangerine, Aquamarine, Apple Green, Jewel, Mica, Wisteria, Loden, Fleur, Sage, Surf, Sapphire, Amethyst, Bisque, Shell, Wedgewood, Honey, Gris, Charcoal/Citron, Ivory, Tea, Bordeaux/Gold, Sienna, Onyx, Lemon, Beaujolais*



Semi Custom Program

A Selection of the 54 Patterns Available





Veranda Collection



CT-58855 7/16" (11mm)

Linen Cord with Tape

Available colors: Chardon Bleu, Waterlily, Silver Birch, Delphinium, Jonquille, Hydrangea, Tea Rose, Hibiscus, Wisteria, Geranium, Goldenrod, Narcisses



GB-58854 1" (25mm)

Linen Crete

Available colors: Chardon Bleu, Waterlily, Silver Birch, Delphinium, Jonquille, Hydrangea, Tea Rose, Hibiscus, Wisteria, Geranium, Goldenrod, Narcisses



BR-58857 1" (25mm)

Linen Brush Fringe

Available colors: Chardon Bleu, Waterlily, Silver Birch, Delphinium, Jonquille, Hydrangea, Tea Rose, Hibiscus, Wisteria, Geranium, Goldenrod, Narcisses



BT-58858 1.5" (38mm)

Ombre Border

Available colors: Chardon Bleu, Waterlily, Silver Birch, Delphinium, Jonquille, Hydrangea, Tea Rose, Hibiscus, Wisteria, Geranium, Goldenrod, Narcisses



BT-58856 2.56" (65mm)

Linen Appliqué Border

Available colors: Wisteria, Narcisses, Petal, Robin's Egg, Hyacinth, Pebble, Oro, Leaf, Antique Coral



TF-58853 3.5" (89mm)

Linen Beaded Fringe

Available colors: Chardon Bleu, Waterlily, Silver Birch, Delphinium, Jonquille, Hydrangea, Tea Rose, Hibiscus, Wisteria, Geranium, Goldenrod, Narcisses



St.Moritz Collection



BT-58846 2.44" (62mm)
 Reine Velvet Border
 Available colors: *Ecru, Olive, Maple*



BT-58850 2.63" (67mm)
 Laudinella Appliqué Border
 Available colors: *Dove, Seaglass, Claret, Eggshell, Gris, Mist, Navy, Oyster, Ecru*



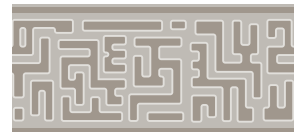
BT-58847 3.25" (83mm)
 Moritz Velvet Border
 Available colors: *Gold, Garnet, Onyx*



BT-58848 2.88" (73mm)
 Carlton Appliqué Border
 Available colors: *Oatmeal, Dove, Seaglass, Truffle, Coral, Indigo*



BT-58849 3.13" (80mm)
 Kempinski Appliqué Border
 Available colors: *Ecru, Mist, Ocher, Eggshell, Umber, Linen, Dresden Blue, Dune*



BT-58845 3.63" (9.2cm)
 Alpina Velvet Border
 Available colors: *Peacock, Charcoal, Olive, Maple*



BT-58851 3" (76mm)
 Giardino Appliqué Border



BT-58852 3" (76mm)
 Botanico Appliqué Border
 Available colors: *Ivory, Cashmere, Heather Grey*



Encore Collection

by Lori Weitzner



979-37483 1" (25mm)
Opaline Cultured Pearl Fringe
Available colors: Nacre



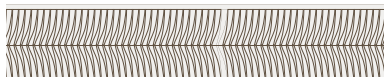
GB-58801 0.69" (17mm)
Cabaret Pleated Metallic Gimp
Available colors: Brushed Silver, Gold Dust, Rosé



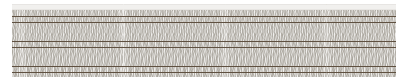
BT-58842 1.75" (44mm)
Promenade Pleated Wool Border
Available colors: Pebble, Shell, Atlantic, Prune, Café, Graphite, Elk



BT-58841 2" (51mm)
Tarantella Pleated Border
Available colors: Ivory, Skylark, Parchment, Mediterranean, Moonstone, Lilac, Warm Sand, Topaz, Dusk, Custard, Sprout



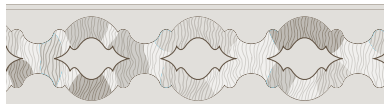
BT-58799 2.25" (57mm)
Minuet Pleated Border
Available colors: Arctic, Bone, Harbor, Slate, Spring, Ginger, Tobasco, Latte



BT-58797 2.5" (64mm)
Merengue Pleated Metallic Border
Available colors: Tide Water, Admiral, Garden, Seafoam, Mulberry, Bleached Coral



BT-58795 2.25" (57mm)
Sashay Appliqué Border
Available colors: Sail, Alabaster, Heather, Silver Lining



BT-58794 3" (76mm)
Virtuoso Appliqué Border
Available colors: Iris, Macadamia, Cove, Armor, Desert Bloom



Savanna Collection



CT-58542 1/4" (6.4mm)

Winton Cord with Tape

Available colors: Ivory, Sand, Shale, Charcoal, Eucalyptus, Mesa, Lake, Sienna



BT-58545 1" (25mm)

Mackay Tweed Border

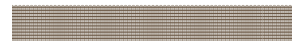
Available colors: Ivory, Sand, Shale, Charcoal, Eucalyptus, Mesa, Lake, Sienna



BT-58544 1.5" (38mm)

Derby Honeycomb Border

Available colors: Ivory, Sand, Shale, Charcoal, Sienna



BT-58543 1.25" (32mm)

Elliot Heathered Border

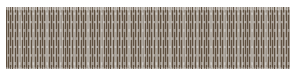
Available colors: Sand, Shale, Eucalyptus, Umber, Lake, Sienna



BR-58547 1.5" (38mm)

Cairns Brush Fringe

Available colors: Sand, Shale, Eucalyptus, Umber, Lake



BT-58546 1.75" (44mm)

Bowen Woven Border

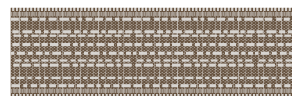
Available colors: Ivory, Sand, Shale, Sienna



BT-58553 2.19" (56mm)

Capella Mohair Border

Available colors: Ivory, Sand, Shale, Eucalyptus, Mesa, Lake, Sienna



BT-58548 2.5" (64mm)

Clermont Strié Border

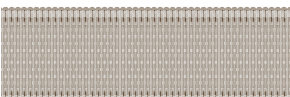
Available colors: Ivory, Sand, Shale, Charcoal, Eucalyptus, Umber, Lake, Ocean, Sienna, Acacia



BT-58554 2.5" (64mm)

Rolleston Chenille Border

Available colors: Lake



BT-58552 2.76" (70mm)

Ashmore Jute Border

Available colors: Charcoal, Mesa, Umber, Lake, Sienna



BT-58550 3" (76mm)

Isa Embroidered Border

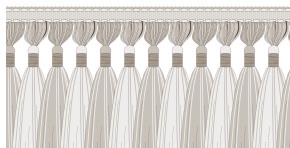
Available colors: Umber, Sienna, Sand



BT-58551 3.5" (89mm)

Ayr Bouclé Border

Available colors: Shale



TF-58549 4" (10.5cm)

Collingsville Linen Tassel Fringe

Available colors: Ivory, Sand, Shale, Mesa, Lake, Sienna, Acacia



Amalfi Collection



CT-58534 1/4" (6mm)
 Sorrento Cotton Piping
 Available colors: *Oyster, Sand, Lavender, Lemon, Blush, Coral, Surf, Dove, Blue Thistle, Basil, Gentian, Indigo*



BT-58535 1.77" (45mm)
 Sorrento Cotton Striped Border
 Available colors: *Oyster, Sand, Lavender, Lemon, Blush, Coral, Surf, Dove, Blue Thistle, Basil, Gentian, Indigo*



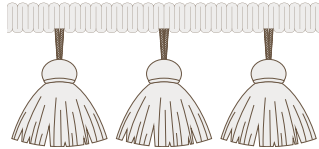
BR-58532 3.5" (89mm)
 Positano Jumbo Brush Fringe
 Available colors: *Cloud, Crimson, Midnight, Slipper, Linen, Mist*



CT-58533 3/8" (10mm)
 Positano Cord with Tape
 Available colors: *Cloud, Crimson, Midnight, Slipper, Linen, Mist*



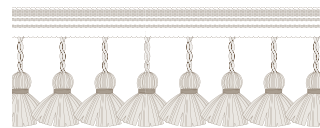
BT-58496 2" (50mm)
 2" Positano Linen Border
 Available colors: *Dijon, Endive, Horizon, Morning Glory, Cornflower, Ink, Salt, Bisque, Rosewater, Cement, Olive, Terra Verte*



TF-58531 4" (10cm)
 Positano Jumbo Tassel Fringe
 Available colors: *Cloud, Crimson, Midnight, Slipper, Linen, Mist*



BT-58555 1" (25mm)
 1" Positano Linen Border
 Available colors: *Dijon, Endive, Horizon, Morning Glory, Cornflower, Ink, Salt, Bisque, Rosewater, Cement, Olive, Terra Verte*



TF-58536 3.31" (84mm)
 Sorrento Cotton Tassel Fringe
 Available colors: *Oyster, Sand, Lavender, Lemon, Blush, Coral, Surf, Dove, Blue Thistle, Basil, Gentian, Indigo*



Milano Collection

CT-58585 5/32" (4mm)

Loro Faux Leather Piping

Available colors: Oyster, Truffle, Indigo, Bordeaux, Nerissimo, Bark

981-56684 5/32" (4mm)

Toscana Nubuck Piping

Available colors: Sandstone, Concrete, Graphite, Mushroom, Café, Sable, Nero, Cammello

CT-58590 7/32" (5.6mm)

Coccodrillo Textured Piping

Available colors: Mahogany, Café, Ecrú, Mist

CT-58589 7/32" (5.6mm)

Spirito Textured Piping

Available colors: Merlot, Cashew, Stone Taupe, Chamois, Frost, Meadow, Waterfall, Cobalt Blue

CT-58583 5/16" (8mm)

Pietro Metallic Leather Piping

Available colors: Argento, Silver, Antique Gold, Bronze, Copper

CT-58584 5/16" (8mm)

Solferino Vintage Leather Piping

Available colors: Sand, Tabak, Cognac, Espresso, Grigio, Greystone, Noir

CT-58587 5/16" (8mm)

Paolo Faux Leather Piping

Available colors: Oyster, Truffle, Indigo, Bordeaux, Nerissimo, Bark

BT-58588 2" (51mm)

Paolo Faux Leather Border

Available colors: Oyster, Truffle, Indigo, Bordeaux, Nerissimo, Bark

BT-58592 3.25" (83mm)

Venezia Appliqué Border

Available colors: Onyx, Marble, Granite, Cioccolato

BT-58591 3.5" (89mm)

Cassati Appliqué Border

Available colors: Onyx, Marble, Granite, Cioccolato

BT-58594 3.5" (89mm)

Nuova Lasercut Border

Available colors: Platinum, Mercury

BT-58595 4" (10cm)

Scala Laser cut Border

Available colors: Platinum, Mercury, Carbon

Veronique Collection



CT-58565 1/8" (2.5mm)
1/8" Cord with Tape



CT-58566 5/16" (8mm)
5/16" Cord with Tape



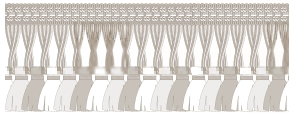
BT-58570 2" (51mm)
Corinne Embroidered Border



BT-58571 2.75" (70mm)
Mireille Embroidered Border



BU-58646 3" (76mm)
Fine Bullion Fringe



TF-58569 3" (76mm)
Tassel Fringe



TT-58573 12.4" (31.5cm)
Spread 32.3" (82cm)
Double Tassel Tieback



KT-58572 7" (17.5cm)
Loop 4.75" (12cm)
Veronique Key Tassel

Available colors in all styles: Pearl, Petal, Blossom, Antique, Cornsilk, Meadow, Porcelain, Leaf, Limestone, Linen



USA 212.704.8000
EUROPE +44.020.7351.5153
SAMUELANDSONS.COM



Perfectly
en Pointe

LORI WEITZNER
for SAMUEL & SONS



samuelandsons.com